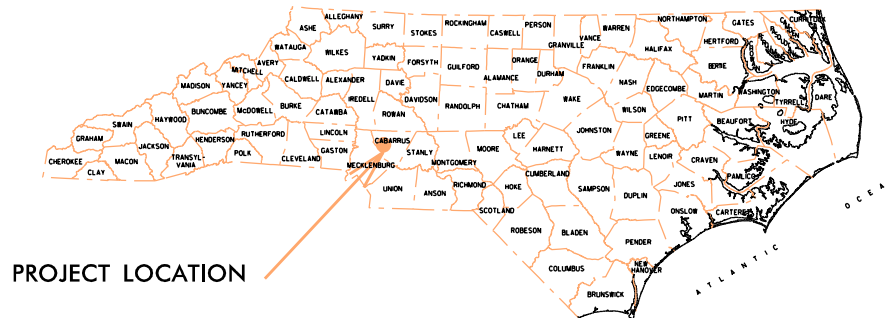


PROJECT: CONCORD NC- Landscape Enhancement

# HIGHWAY LANDSCAPE DEVELOPMENT PROJECT

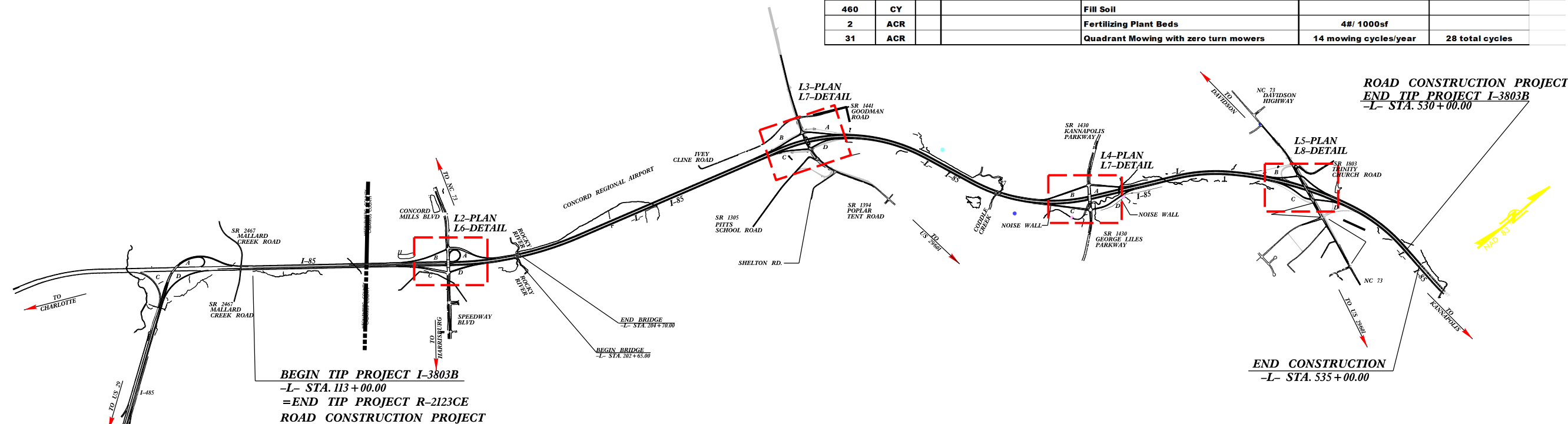
## CABARRUS COUNTY LANDSCAPE ENHANCEMENT

LOCATION: I-85, Concord NC  
TYPE OF WORK: Interchange Landscape Enhancements



### SUMMARY OF QUANTITIES

QTY.	UNIT	COMMON NAME	BOTANICAL NAME	FURNISH	REMARKS
<b>Trees</b>					
34	EA	Bald Cypress	Taxodium distichum	8-10', B&B or Cont.	Min. 1 1/4" Cal
9	EA	Black Tupelo	Nyssa sylvatica	8-10', B&B or Cont.	Min. 1 1/4" Cal
134	EA	Chinese Elm	Ulmus parvifolia	8-10', B&B or Cont.	Min. 1 1/4" Cal
2	EA	Coral Bark Maple	Acer palmatum 'Sango Kaku'	10-12', Specimen	Min. 5' Spread
81	EA	Deodar Cedar	Cedrus deodara	6-8', B&B or Cont.	Full, Min. 1 1/4" cal
45	EA	Forest Pansy Redbud	Cercis canadensis 'Forest Pansy'	6-8', B&B or Cont.	Min. 1" Cal
320	EA	Green Giant Arborvitae	Thuja 'Green Giant'	6-8', B&B or Cont.	Min. 1" Cal
277	EA	Loblolly Pine	Pinus taeda	8-10', #10 Cont.	Min. 1 1/4" Cal
12	EA	Muskogee Crape Myrtle	Lagerstroemia indica 'Muskogee'	6-8', B&B or Cont.	3-4 stem, 1 1/4" cal
61	EA	Nellie R Stevens Holly	Ilex x 'Nellie R Stevens'	8-10', CONT. GROWN	Min. 1 1/2" Cal
24	EA	Potomac Crape Myrtle	Lagerstroemia indica 'Potomac'	8-10', B&B or Cont.	3-4 stem, 1 1/4" cal
67	EA	Scarlet Oak	Quercus coccinea	8-10', B&B or Cont.	Min. 1 1/4" Cal
4	EA	Shumard Oak	Quercus shumardii	8-10', B&B or Cont.	Min. 1 1/4" Cal
15	EA	Yoshino Cherry	Prunus x yedoensis	8-10', B&B or Cont.	Min. 1 1/2" Cal
<b>Shrubs</b>					
24	EA	Burgundy Loropetalum	Loropetalum chinense 'Burgundy'	#3 Cont.	18-24"
13	EA	Carolina Cherry Laurel	Prunus caroliniana	#7 cont.	3-4' hgt
297	EA	Dwarf Burning Bush	Euonymus alatus 'Compactus'	#3 Cont.	18-24"
53	EA	Shoal Creek Chastetree	Vitex agnus-castus 'Shoal Creek'	#7 cont.	3-4' hgt
<b>Grasses &amp; Perennials</b>					
885	EA	Cloud Nine Switch Grass	Panicum virgatum 'Cloud Nine'	QT. Plug	3' O.C.
<b>Descriptions</b>					
2800	CY	Mulch for Planting			
150	MG	Water for Planting			
25,000	SY	Pre emergence Herbicidal Treatment			
25,000	SY	Post emergence Herbicidal Treatment			
4	ACR	Selective Undergrowth Removal			
1	ACR	Plant Bed Cleanup and Vegetation Removal			
20	EA	Tree Removal			
780	LF	Stacked Stone Wall			
31	ACRE	Initial Seeding			
31	ACRE	First Year Spring Seeding			
31	ACRE	First Year Fall Seeding			
31	ACRE	Second Year Spring Seeding			
31	ACRE	Second Year Fall Seeding			
5	ACRE	Reforestation Bed Grading			
460	CY	Topsoil			
460	CY	Fill Soil			
2	ACR	Fertilizing Plant Beds		4#/ 1000sf	
31	ACR	Quadrant Mowing with zero turn mowers		14 mowing cycles/year	28 total cycles



T.I.P. #	STATE PROJECT W.B.S. #	SHEET #	SHEET # TOTAL
I-3803B(L)	34187.3.5	L 1	11
FED. PROJ. #	DESCRIPTION	DIVISION	
NHIMF-0085(44)	LANDSCAPE	10	

#### CONVENTIONAL SYMBOLS

County Line	---
City or Town Line	---
Exist. Right of Way Line Marker	---
Prop. Right of Way Line Marker (By Others)	---
Prop Right of Way Line Marker (By Contract)	---
Exist. Control of Access Line	---
Prop. Control of Access Line	---
Property Line	---
Easement Line	---
Slope Stake Line	---
Exist. Fence	---
Prop. Woven Wire Fence	---
Prop. Chain Link Fence	---
Exist. Road	---
Prop. Road	---
Guardrail	---
Survey Line	---
Denotes Line Equality	---
Bridge	---
Culvert	---
Railroad	---
Woods	---
Exist. Telephone Pole	---
Prop. Telephone Pole	---
Tower Pole and Line	---
Exist. Power Pole	---
Prop. Power Pole	---
Sanitary Sewer Line	---
Water Line	---
Gas Line	---
Picnic Shelter	---
Regeneration	---
Reforestation	---

#### INDEX OF SHEETS:

L 1 ...	TITLE, DESCRIPTION, LOCATION
L 2 - L 5 ...	INTERCHANGE PLANS
L 6- L 8 ...	INTERCHANGE DETAILS
L 9 ...	REFORESTATION/REVEGETATION DETAIL
L 10 ...	RAISED STONE PLANT BED DETAIL
L 11 ...	PLANTING DETAILS

PREPARED BY: BK DATE: 12/2017

#### REVISIONS

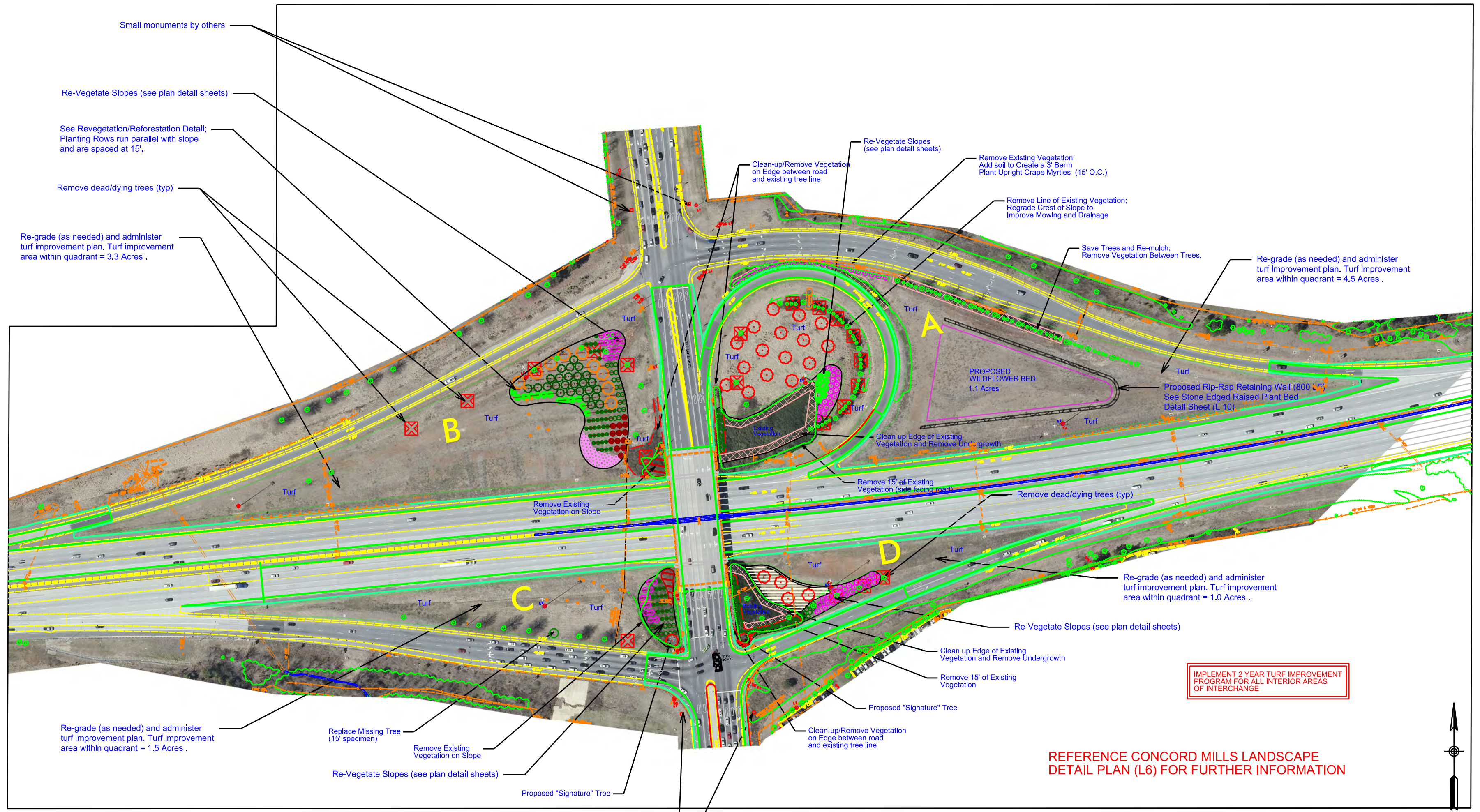
DATE	DESCRIPTION
NOV-2017	INTERCH. PLANTING RE-DESIGN
JAN-2018	REVIEW CORRECTIONS

2014 American Standard for Nursery Stock  
2018 NCDOT STANDARD SPECIFICATIONS  
PREPARED IN THE OFFICE OF:  
NCDOT- ROADSIDE ENVIRONMENTAL UNIT  
AESTHETIC ENGINEERING SECTION  
1557 MAIL SERVICE CENTER  
RALEIGH NC 27699 919-707-2920

STATE OF NORTH CAROLINA  
DEPARTMENT OF TRANSPORTATION

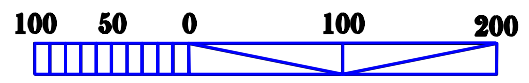
LOCATION: I-85, CONCORD NC  
TYPE OF WORK: Interchange Landscape Enhancements  
COUNTY: CABARRUS COUNTY

\$\$\$\$\$SYTIME\$\$\$\$\$  
\$\$\$\$\$SYUSER\$\$\$\$\$



IMPLEMENT 2 YEAR TURF IMPROVEMENT PROGRAM FOR ALL INTERIOR AREAS OF INTERCHANGE

REFERENCE CONCORD MILLS LANDSCAPE DETAIL PLAN (L6) FOR FURTHER INFORMATION



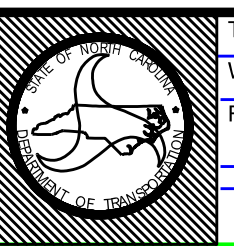
ncdot - Roadside environmental unit  
 landscape design & Development  
 1557 mail service center raleigh nc 27699-1557  
 ph: 919-707-2920 fax: 919-715-2554  
[http://www.ncdot.org/doh/operations/dp\\_chief\\_eng/roadside/](http://www.ncdot.org/doh/operations/dp_chief_eng/roadside/)

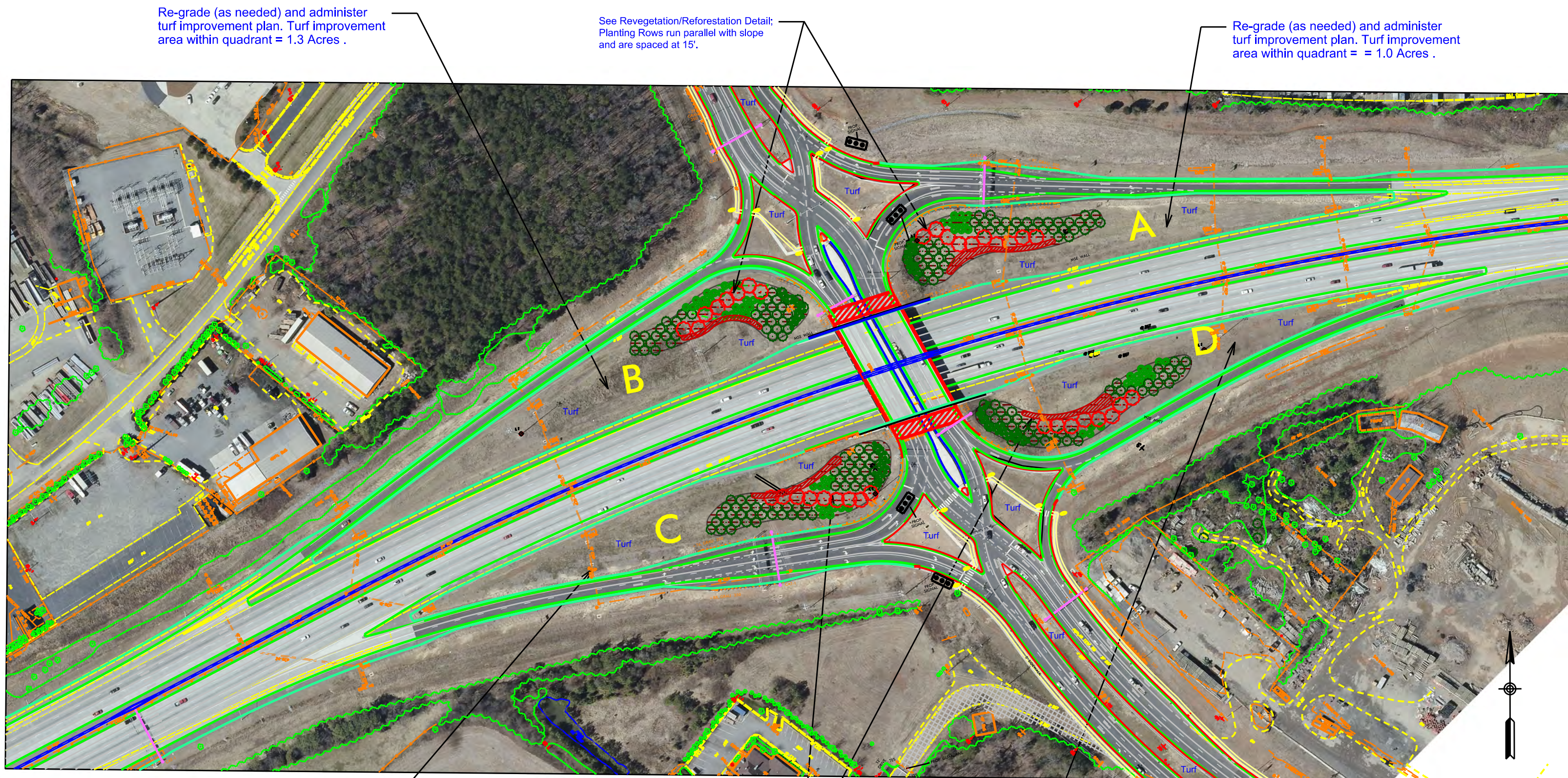
I-3803B I-85  
 Landscape Development Plan  
 Concord, NC

*R.M. Kopetsky*

sheet description:	prel. design date : June/2016	Interchange Enhancements
	checked by & date :	I-85 @ Concord Mills
	final design date : Dec/2017	

T.I.P. #	I-3803 B
WBS #	
FED I.D. #	
sheet no :	total sheet no :
L2	11





Re-grade (as needed) and administer turf improvement plan. Turf improvement area within quadrant = 1.3 Acres .

See Revegetation/Reforestation Detail; Planting Rows run parallel with slope and are spaced at 15'.

Re-grade (as needed) and administer turf improvement plan. Turf improvement area within quadrant = 1.0 Acres .

Re-grade (as needed) and administer turf improvement plan. Turf improvement area within quadrant = 1.0 Acres .

See Revegetation/Reforestation Detail; Planting Rows run parallel with slope and are spaced at 15'.

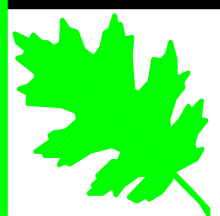
Re-grade (as needed) and administer turf improvement plan. Turf improvement area within quadrant = 1.2 Acres .

Turf Improvement Program includes noted Traffic Islands= 1.8 Acres



IMPLEMENT 2 YEAR TURF IMPROVEMENT PROGRAM FOR ALL DELINEATED INTERCHANGE AND TRAFFIC ISLAND AREAS

REFERENCE POPLAR TENT LANDSCAPE DETAIL PLAN (L7) FOR FURTHER INFORMATION



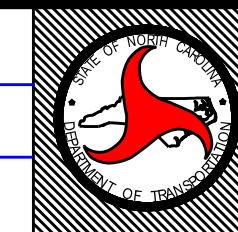
ncdot - Roadside environmental unit  
 landscape design & Development  
 1557 mail service center raleigh nc 27699-1557  
 ph: 919-707-2920 fax: 919-715-2554  
[http://www.ncdot.org/doh/operations/dp\\_chief\\_eng/roadside/](http://www.ncdot.org/doh/operations/dp_chief_eng/roadside/)

I-3803B I-85  
 Landscape Development Plan  
 Concord, NC

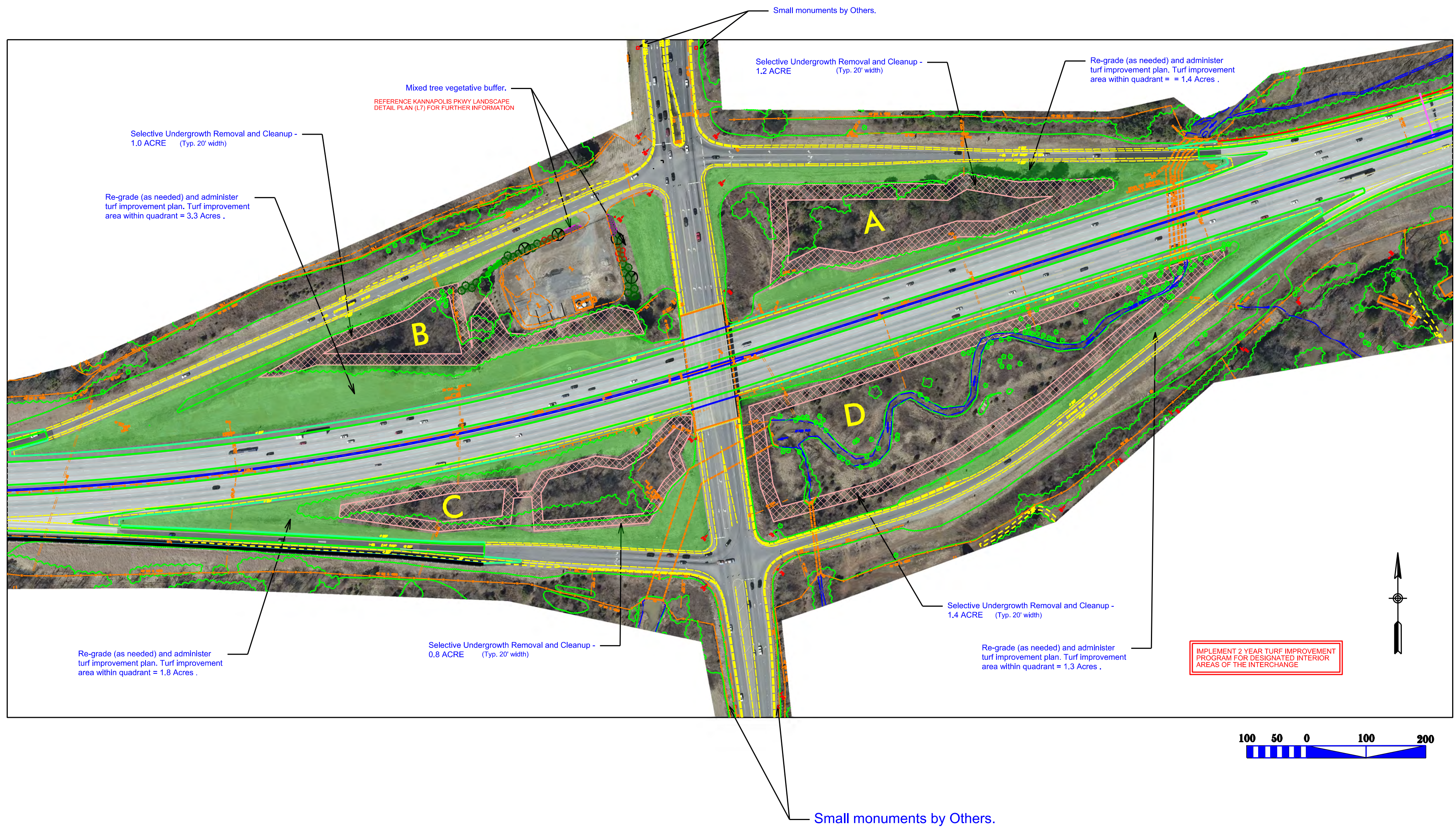
*RN Kopetsky*

prel. design date : June/2016  
 checked by & date :  
 final design date : Dec/2017

Interchange Enhancements  
 I-85 @ Poplar Tent



T.I.P. # I-3803 B  
 WBS #  
 FED I.D. #  
 sheet no : L3 total sheet no : 11



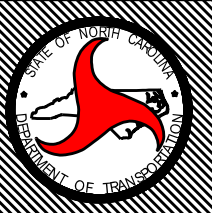

**ncdot - Roadside environmental unit**  
**landscape design & Development**  
 1557 mail service center raleigh nc 27699-1557  
 ph: 919-707-2920 fax: 919-715-2554  
[http://www.ncdot.org/doh/operations/dp\\_chief\\_eng/roadside/](http://www.ncdot.org/doh/operations/dp_chief_eng/roadside/)

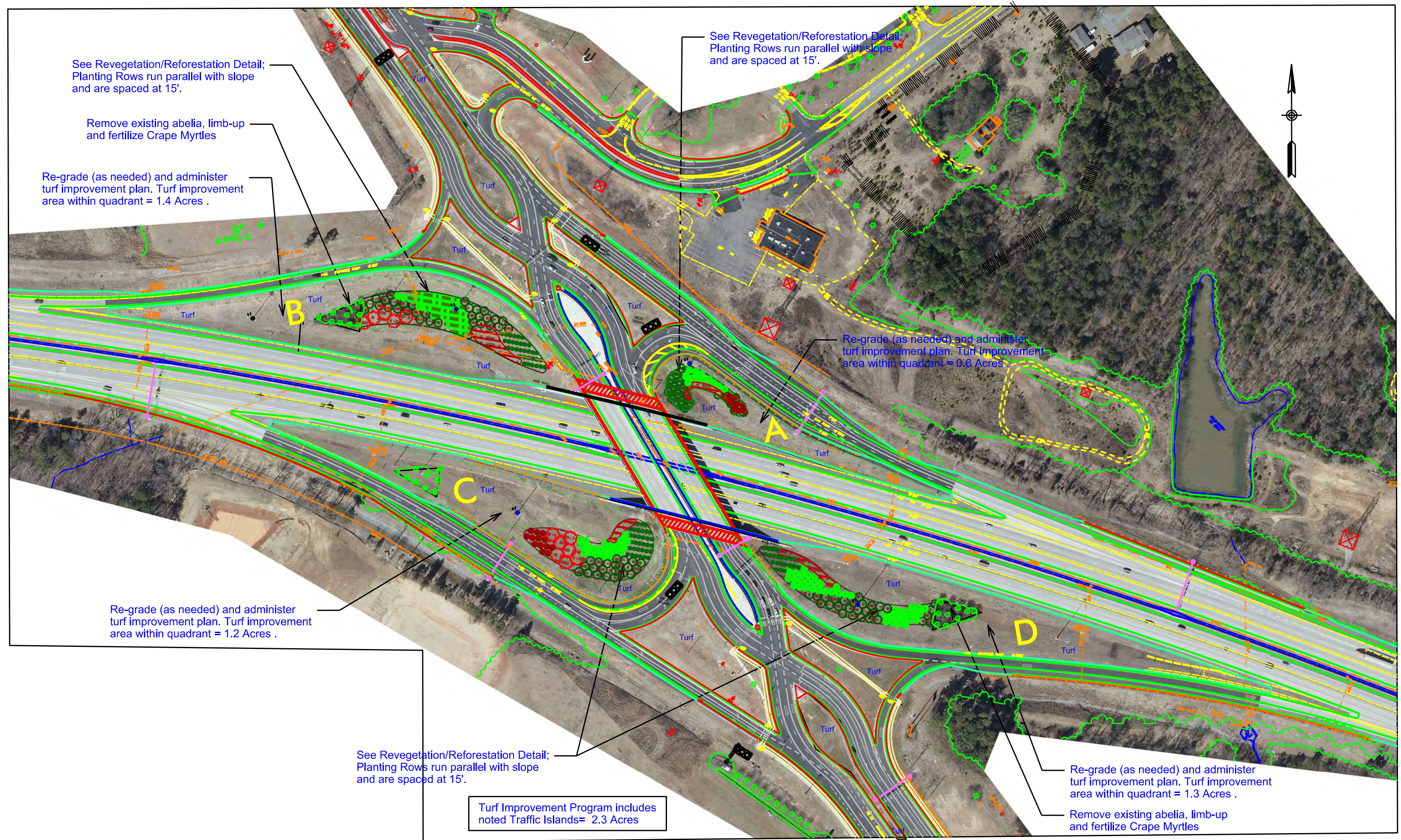
**I-3803B I-85**  
**Landscape Development Plan**  
**Concord, NC**



sheet description:  
 prel. design date : **June/2016**  
 checked by & date :  
 final design date : **Dec/2017**

**Interchange Enhancements**  
**I-85 @ Kannapolis Pkwy**


 T.I.P. # **I-3803 B**  
 WBS #  
 FED I.D. #  
 sheet no : **L4** total sheet no : **11**



IMPLEMENT 2 YEAR TURF IMPROVEMENT PROGRAM FOR ALL DELINEATED INTERCHANGE AND TRAFFIC ISLAND AREAS

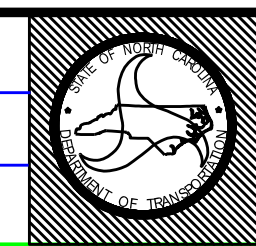
REFERENCE US 73 INTERCHANGE LANDSCAPE DETAIL PLAN (L8) FOR FURTHER INFORMATION

ncdot - Roadside environmental unit  
 landscape design & Development  
 1557 mail service center raleigh nc 27699-1557  
 ph: 919-707-2920 fax: 919-715-2554  
[http://www.ncdot.org/doh/operations/dp\\_chief\\_eng/roadside/](http://www.ncdot.org/doh/operations/dp_chief_eng/roadside/)

I-3803B I-85  
 Landscape Development Plan  
 Concord, NC

*RN Kopetaky*

prel. design date :	June/2016	Interchange Enhancements
checked by & date :		I-85 @ US 73
final design date :	Dec/2017	

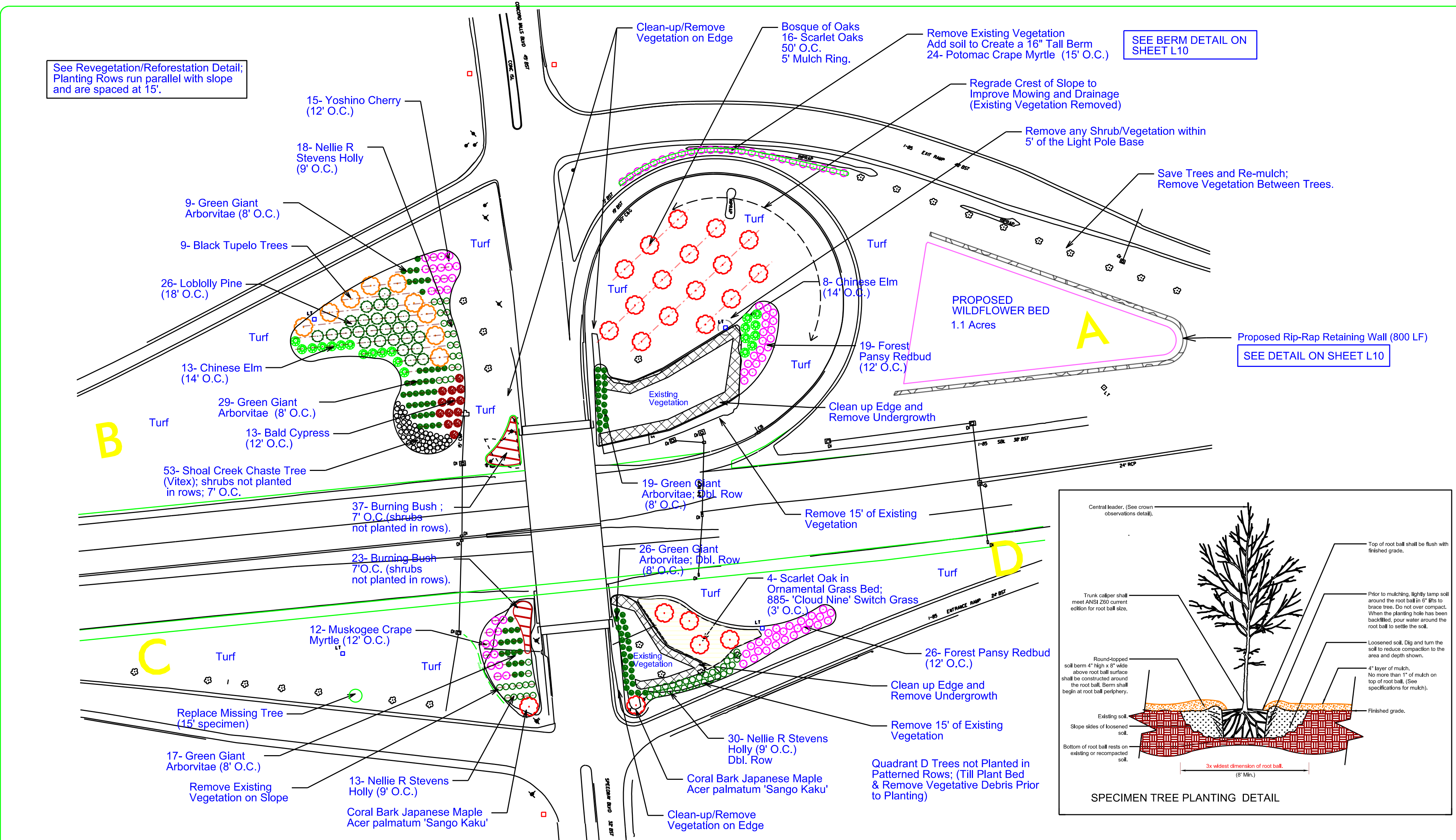
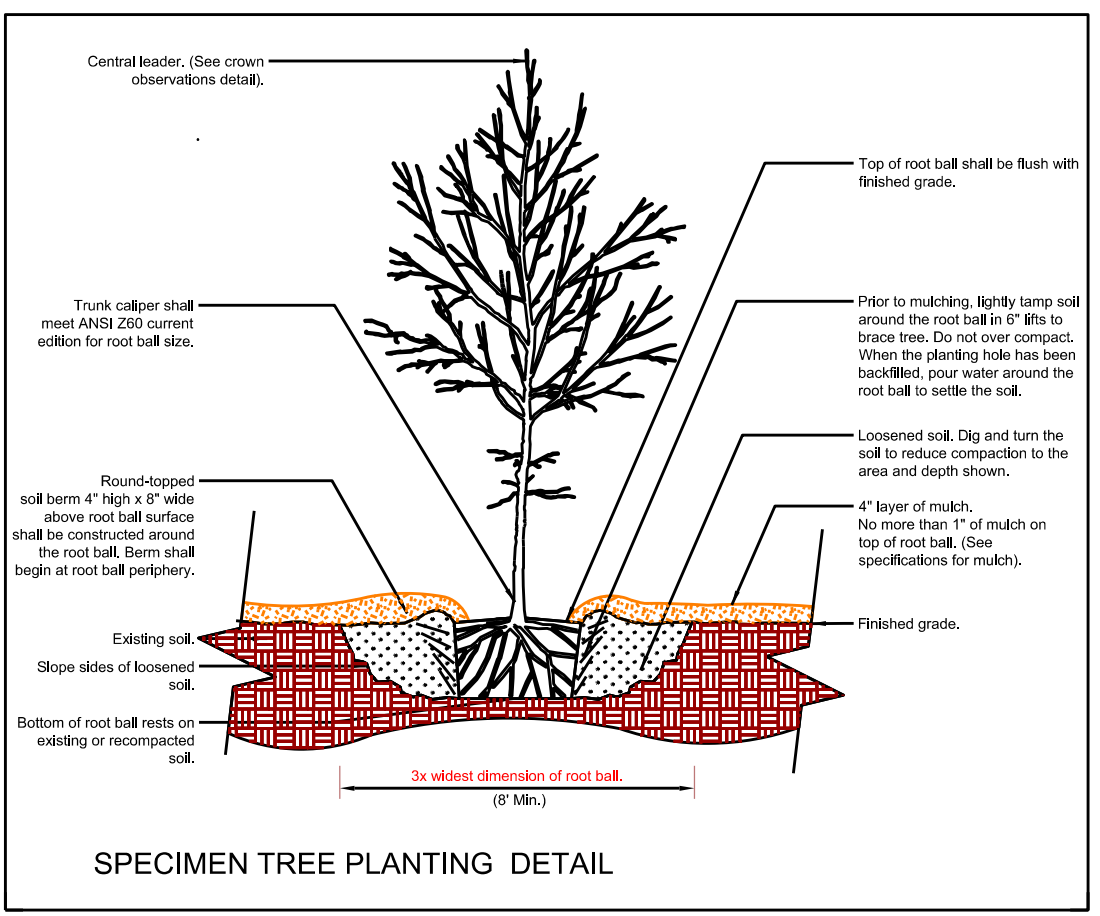


T.I.P. #	I-3803 B
WBS #	
FED I.D. #	
sheet no :	L5
total sheet no :	11

See Revegetation/Reforestation Detail;  
Planting Rows run parallel with slope  
and are spaced at 15'.

SEE BERM DETAIL ON  
SHEET L10

SEE DETAIL ON SHEET L10



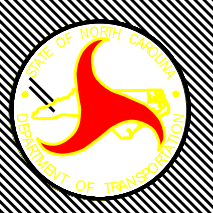
 ncdot - Roadside environmental unit  
landscape design & Development  
1557 mail service center raleigh nc 27699-1557  
ph: 919-707-2920 fax: 919-715-2554  
[http://www.ncdot.org/doh/operations/dp\\_chief\\_eng/roadside/](http://www.ncdot.org/doh/operations/dp_chief_eng/roadside/)

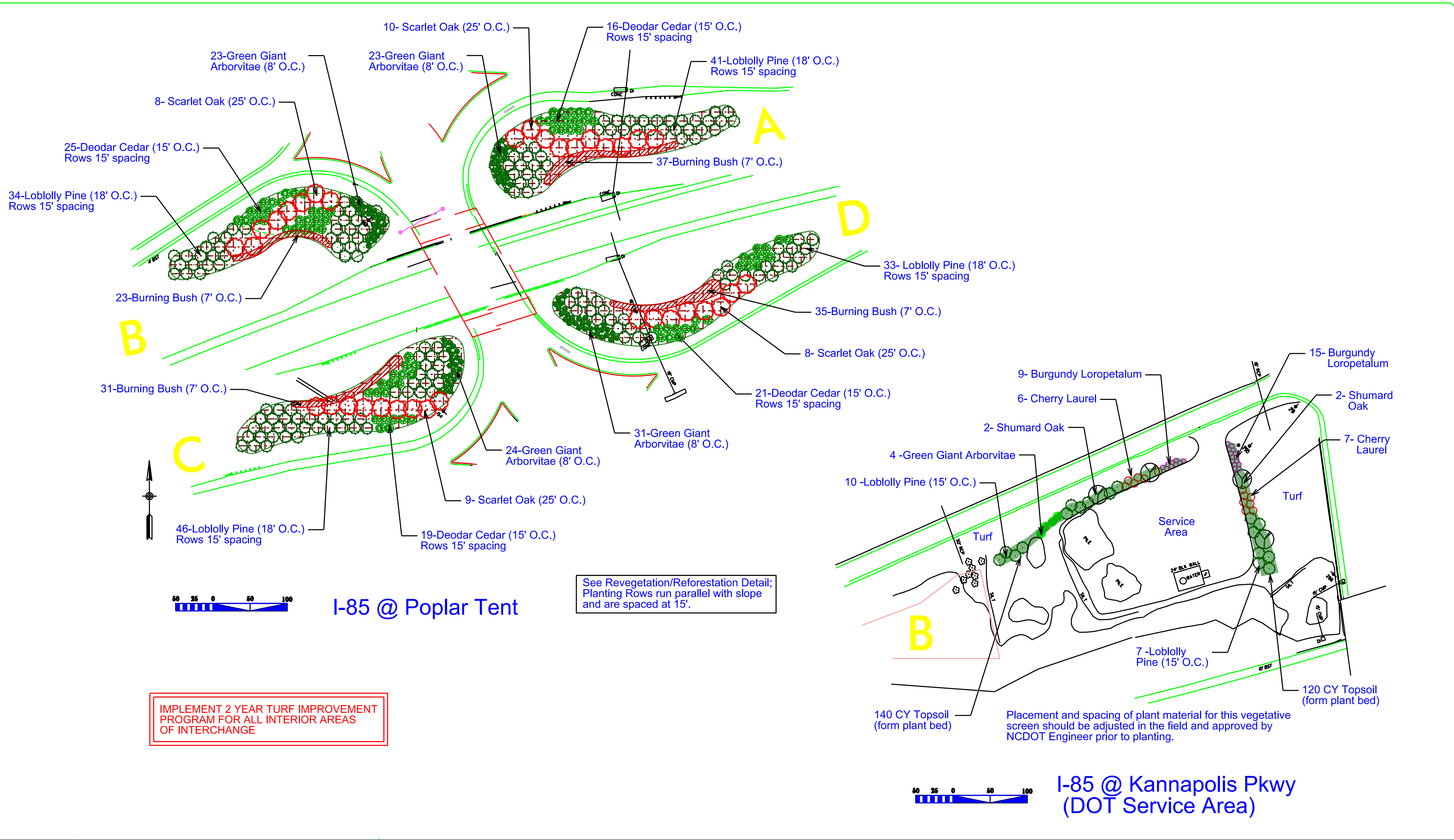
I-3803B I-85  
Landscape Development Plan  
Concord, NC



sheet description:  
 prel. design date : Rev. Nov 2017  
 checked by & date :  
 final design date : Dec 2017

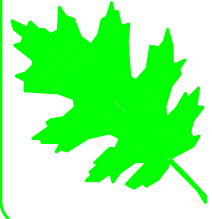
Interchange Enhancements  
 Concord Mills Interchange  
 Planting Plan Detail

 T.I.P. # I-3803 B  
 WBS #  
 FED I.D. #  
 sheet no : L6 total sheet no : 11



I-85 @ Poplar Tent

I-85 @ Kannapolis Pkwy (DOT Service Area)

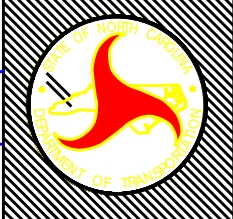


ncdot - Roadside environmental unit  
 landscape design & Development  
 1557 mail service center raleigh nc 27699-1557  
 ph: 919-707-2920 fax: 919-715-2554  
[http://www.ncdot.org/doh/operations/dp\\_chief\\_eng/roadside/](http://www.ncdot.org/doh/operations/dp_chief_eng/roadside/)

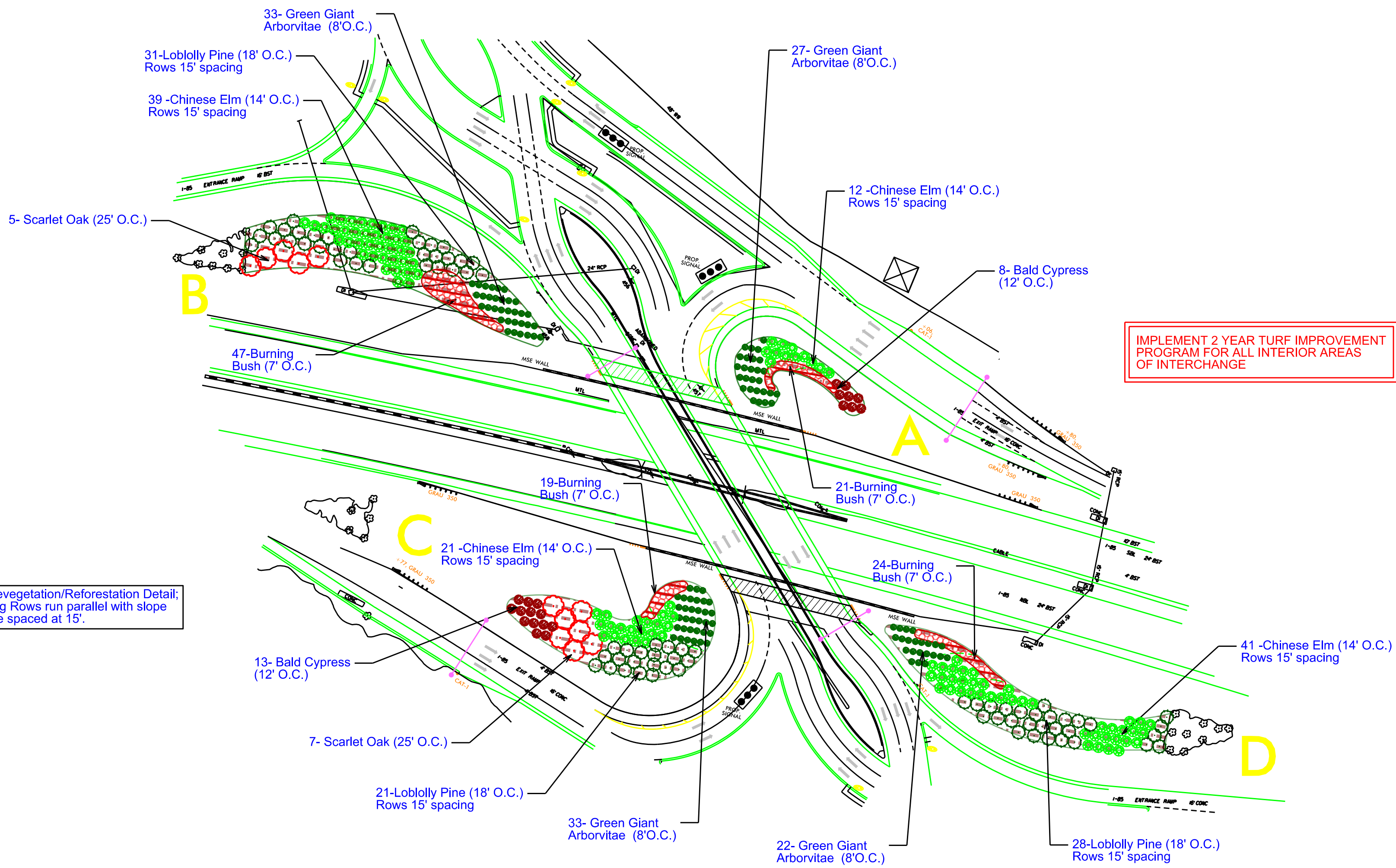
I-3803B I-85  
 Landscape Development Plan  
 Concord, NC

RN Kopetsky

sheet description:	prel. design date : Rev. Nov 2017	Interchange Enhancements
	checked by & date :	Poplar Tent & Kannapolis Pkwy
	final design date :	Interchange Planting Details



T.I.P. #	I-3803 B
WBS #	
FED I.D. #	
sheet no :	total sheet no :
L7	11



See Revegetation/Reforestation Detail;  
Planting Rows run parallel with slope  
and are spaced at 15'.

IMPLEMENT 2 YEAR TURF IMPROVEMENT  
PROGRAM FOR ALL INTERIOR AREAS  
OF INTERCHANGE



I-85 @ US 73

See Revegetation/Reforestation Detail;  
Planting Rows run parallel with slope  
and are spaced at 15'.

*RN Kopetsky*



ncdot - Roadside environmental unit  
landscape design & Development  
1557 mail service center raleigh nc 27699-1557  
ph: 919-707-2920 fax: 919-715-2554  
[http://www.ncdot.org/doh/operations/dp\\_chief\\_eng/roadside/](http://www.ncdot.org/doh/operations/dp_chief_eng/roadside/)

I-3803B I-85  
Landscape Development Plan  
Concord, NC

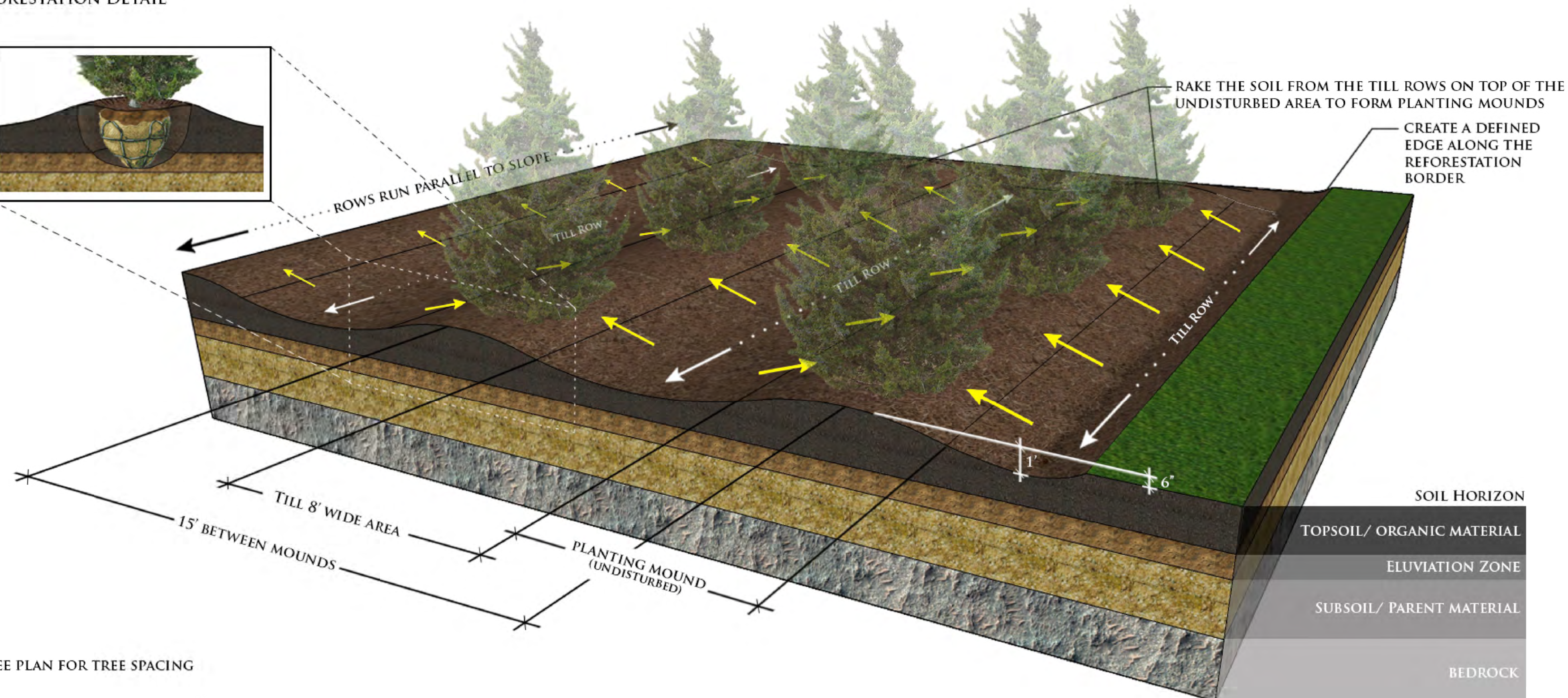
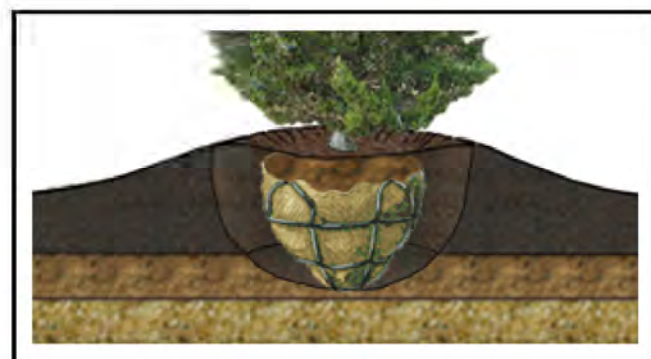
sheet description:	prel. design date :	Rev. Nov 2017	Interchange Enhancements
	checked by & date :		US 73 Interchange
	final design date :		Planting Details



T.I.P. #	I-3803 B
WBS #	
FED I.D. #	
sheet no :	total sheet no :
L8	11



REFORESTATION DETAIL



\* SEE PLAN FOR TREE SPACING

\* TREAT WITH PRE-EMERGENT & POST-EMERGENT HERBICIDE (AS DIRECTED BY THE ROADSIDE ENVIRONMENTAL ENGINEER)



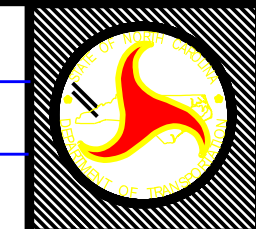
ncdot - Roadside environmental unit  
 landscape design & Development  
 1557 mail service center raleigh nc 27699-1557  
 ph: 919-707-2920 fax: 919-715-2554  
[http://www.ncdot.org/doh/operations/dp\\_chief\\_eng/roadside/](http://www.ncdot.org/doh/operations/dp_chief_eng/roadside/)

I-3803B I-85  
 Landscape Development Plan  
 Concord, NC

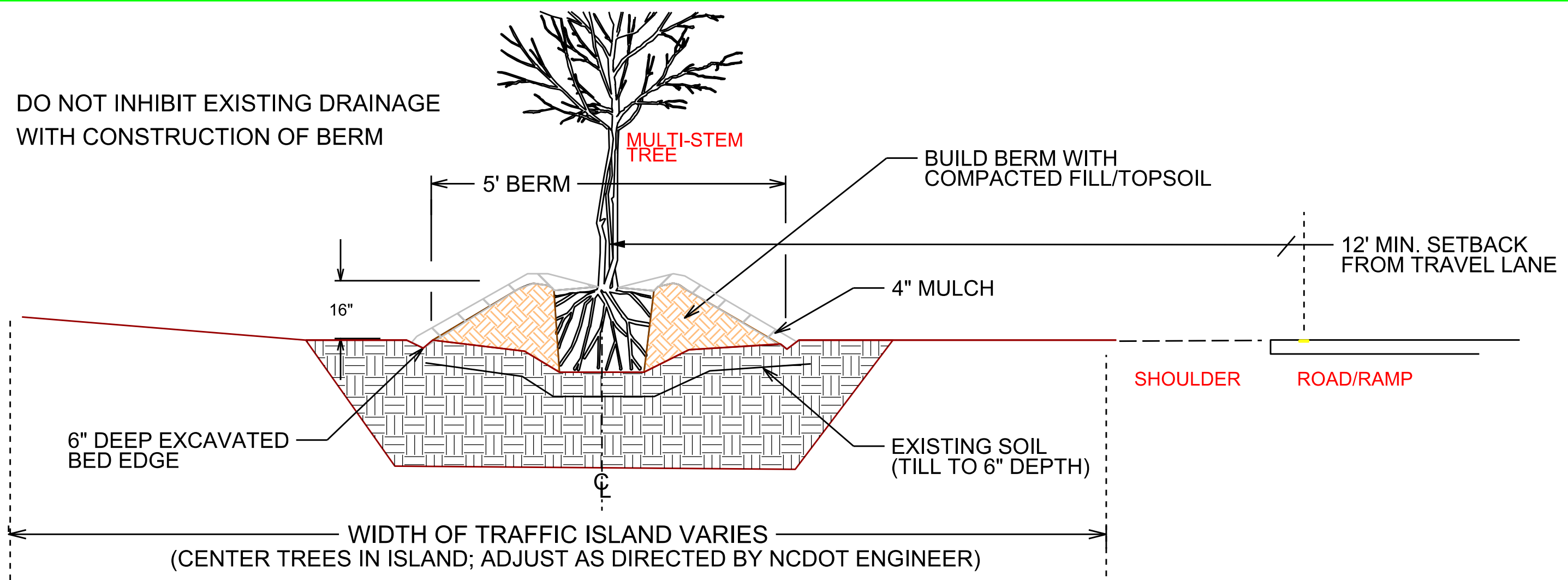
RN Kopetsky

prel. design date :	June/2016
checked by & date :	
final design date :	

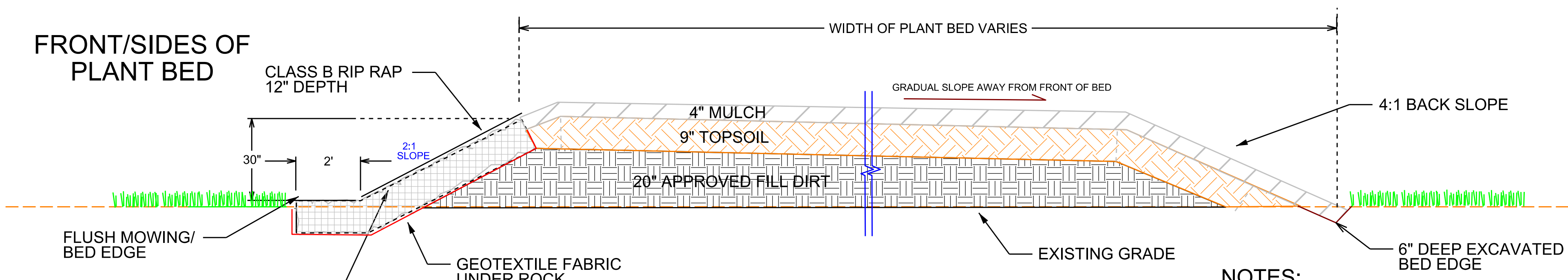
Interchange Enhancements
Revegetaion/Reforestation
Detail Schematic



T.I.P. #	I-3803 B
WBS #	
FED I.D. #	
sheet no :	L9
total sheet no :	11



**BERM SECTION- CONCORD BLVD RAMP PLANTING**  
NOT TO SCALE



**RIP-RAP RETAINING WALL RAISED PLANT BED SECTION**  
NOT TO SCALE

- NOTES:**
- 1) FRONT OF BED FACING POINT WHERE RAMP MEETS MAIN ROAD.
  - 2) PRIOR TO CONSTRUCTION, A SAMPLE OF THE STONE WALL TO BE BUILT FOR ENGINEER REVIEW AND APPROVAL.

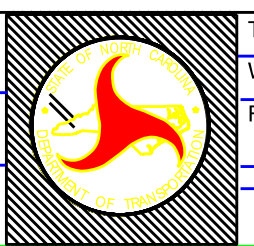
 ncdot - Roadside environmental unit  
landscape design & Development  
1557 mail service center raleigh, nc 27699-1557  
ph: 919-707-2920 fax: 919-715-2554  
[http://www.ncdot.org/doh/operations/dp\\_chief\\_eng/roadside/](http://www.ncdot.org/doh/operations/dp_chief_eng/roadside/)

**I-3803B I-85**  
**Landscape Development Plan**  
**Concord, NC**

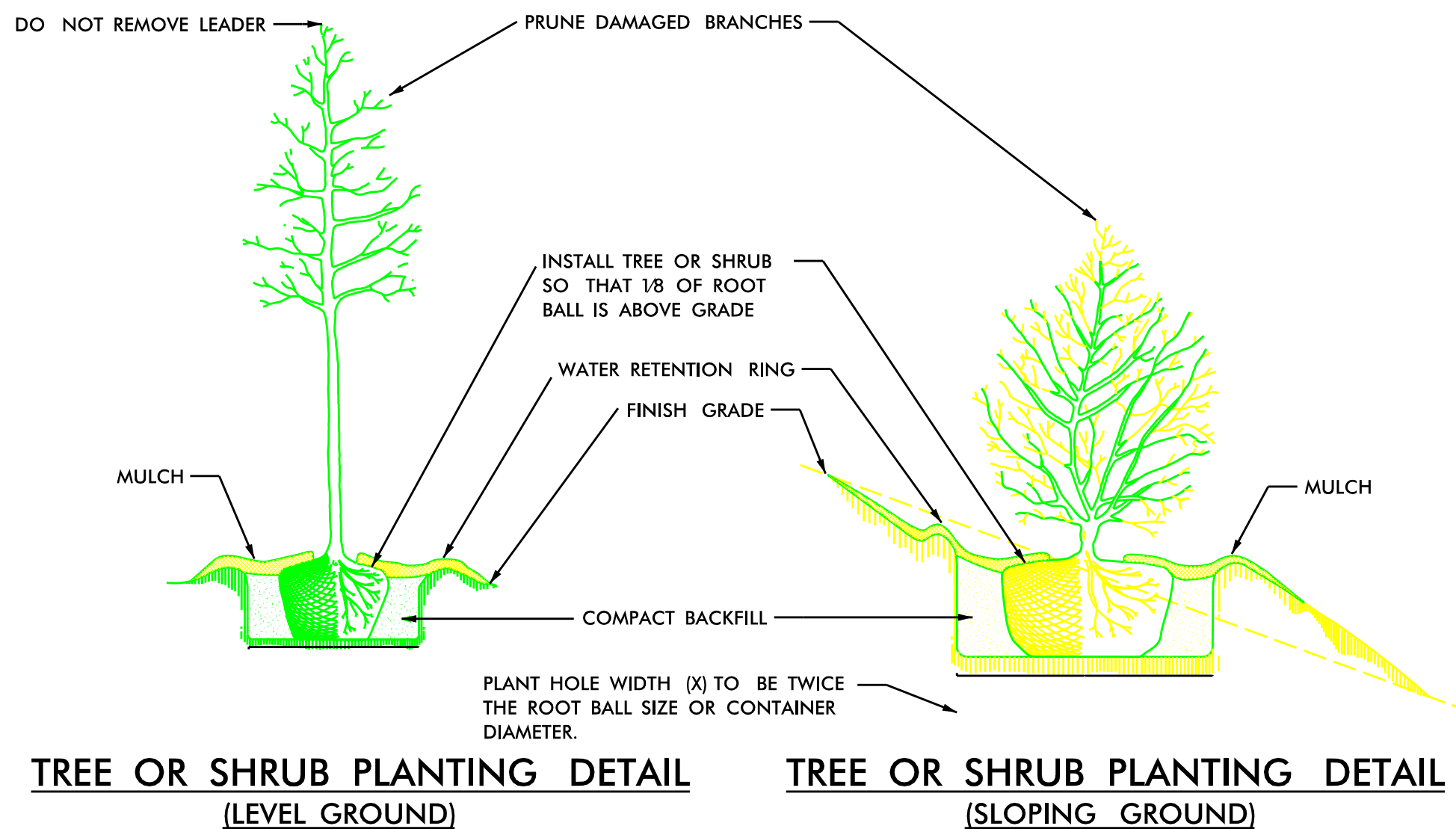
*RN Kopetsky*

prel. design date :	May/2017
checked by & date :	Rev Jan/2018
final design date :	

Stone Edged Raised Plant
Bed & Berm Planting
Details

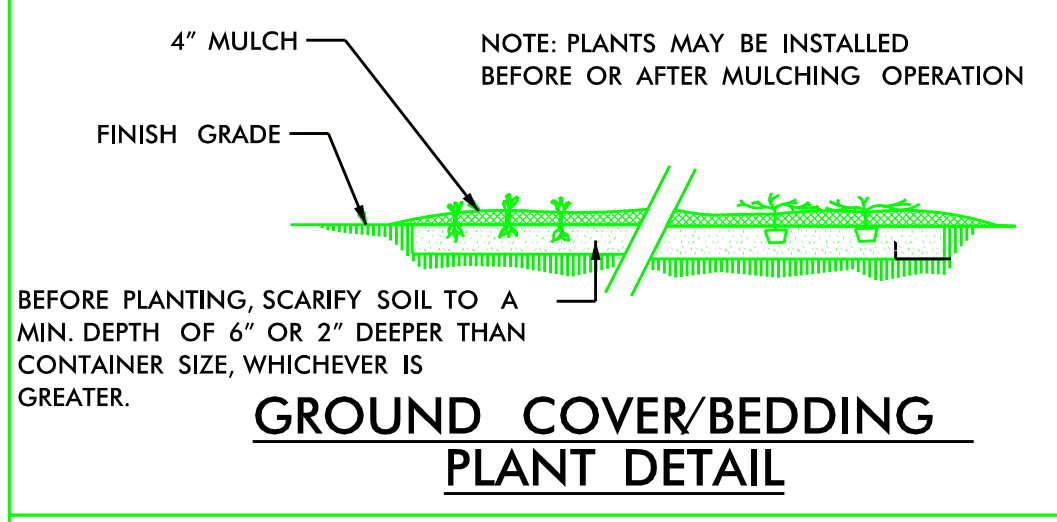


T.I.P. #	I-3803 B
WBS #	
FED I.D. #	
sheet no :	L10
total sheet no :	11

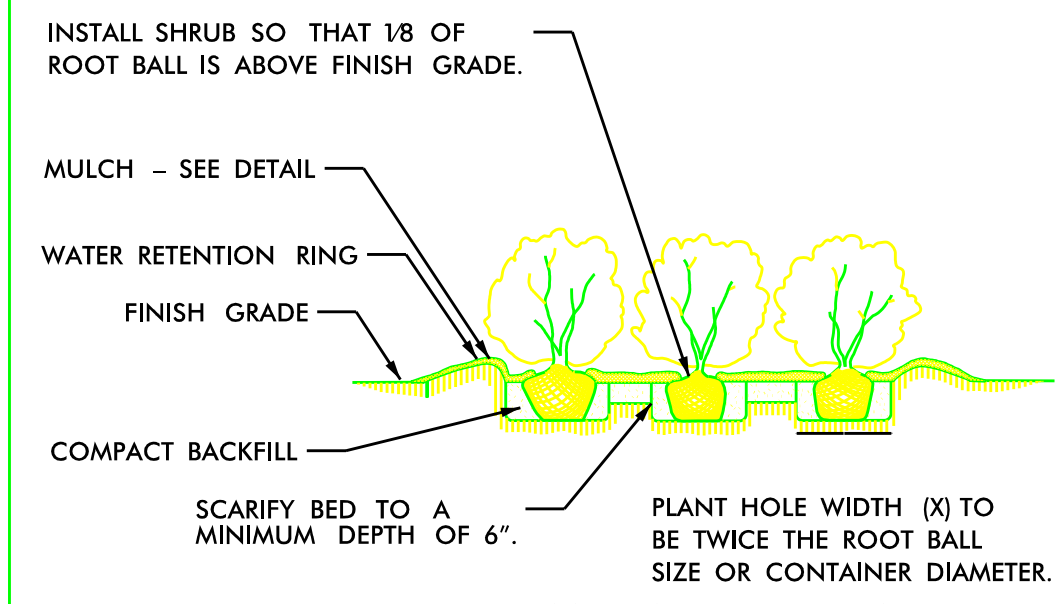


**TREE OR SHRUB PLANTING DETAIL**  
(LEVEL GROUND)

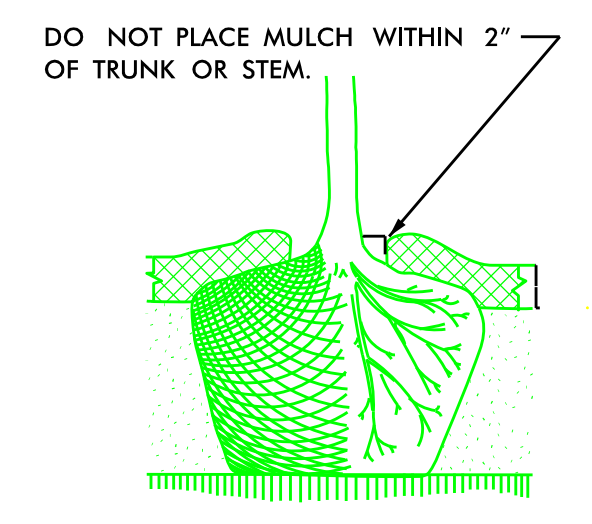
**TREE OR SHRUB PLANTING DETAIL**  
(SLOPING GROUND)



**GROUND COVER/BEDDING PLANT DETAIL**

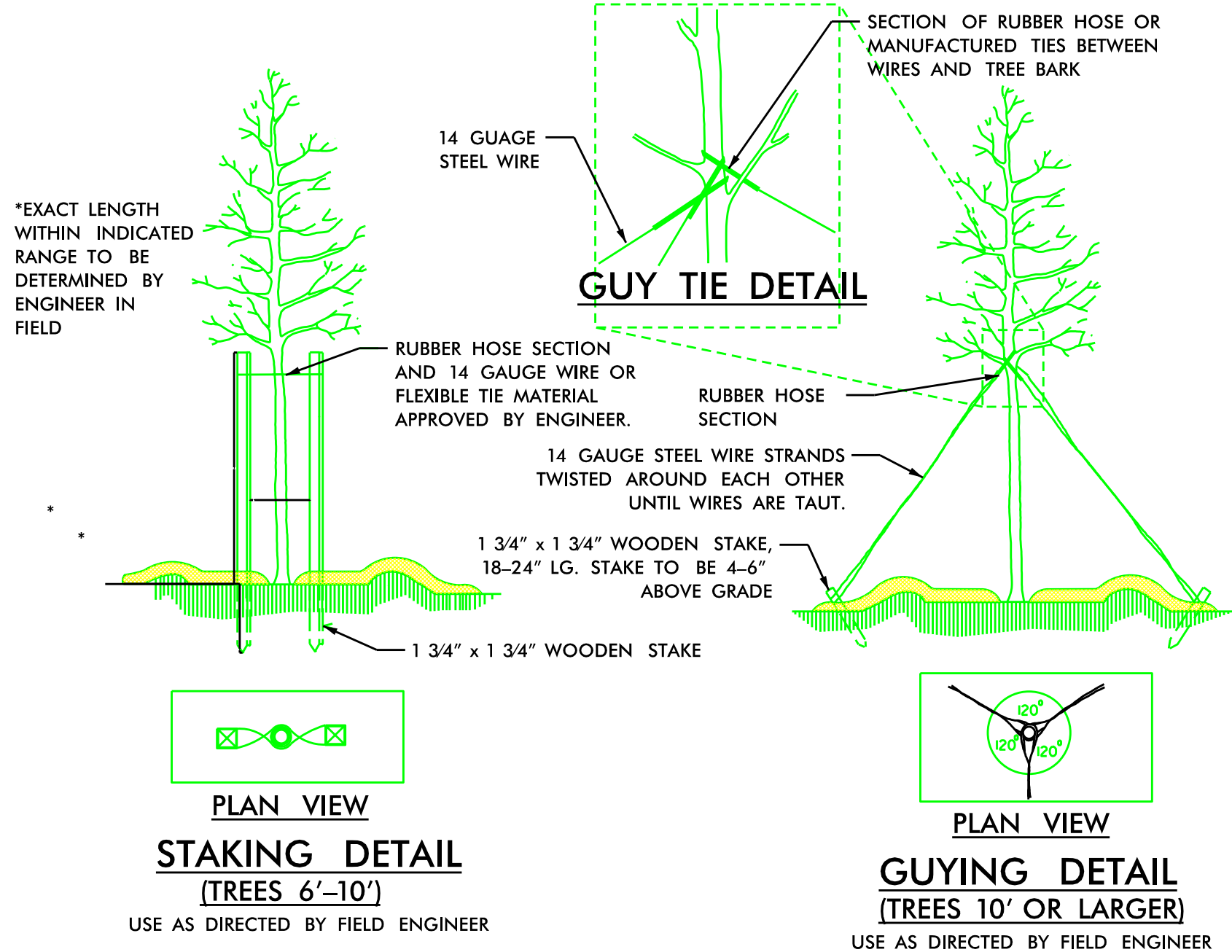


**SHRUB BED PLANTING DETAIL**



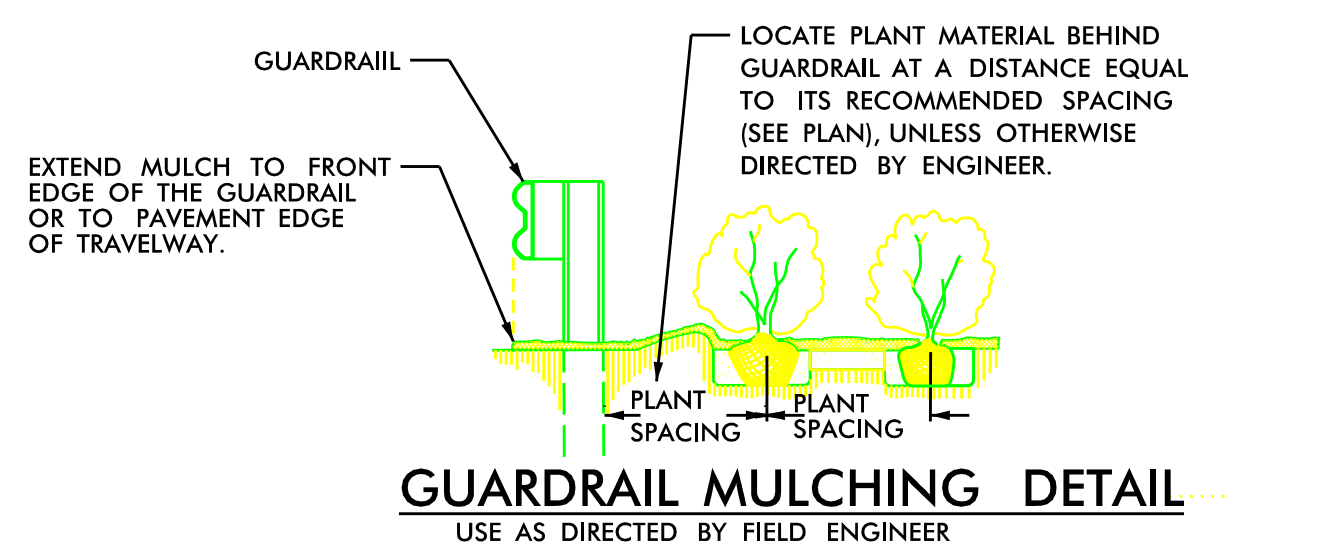
**MULCH DETAIL**

- NOTES:**
- 🌿 SCHEDULE FOR PLANT HOLE SIZE: PLANT HOLE WIDTH (X) TO BE TWICE THE ROOT BALL SIZE OR CONTAINER DIAMETER.
  - 🌿 SEE STANDARD SPECIFICATIONS FOR PLANT BED FUMIGATION AND HERBICIDAL TREATMENT.
  - 🌿 APPLY FERTILIZER AT PLANTING TIME IN THE FORM OF A SLOW RELEASE PELLET OR TABLET. APPLY AT RATE RECOMMENDED BY MANUFACTURER. BOTH RATE AND FORMULATION MUST BE APPROVED BY FIELD ENGINEER PRIOR TO APPLICATION.
  - 🌿 REMOVE WIRE BASKET AND FOLD BURLAP BACK FROM TOP OF ROOT BALL BEFORE BACKFILLING IS COMPLETE.
  - 🌿 ALL PRUNING TO FOLLOW STANDARD ARBORICULTURAL PRACTICES AS SPECIFIED BY INTERNATIONAL SOCIETY OF ARBORICULTURE.
  - 🌿 DO NOT ATTEMPT TO STRAIGHTEN A TREE THAT HAS BEEN PLANTED AT AN ANGLE WITH THE USE OF STAKING OR GUYING. DIG TREE AND REPLANT TO UPRIGHT POSITION.

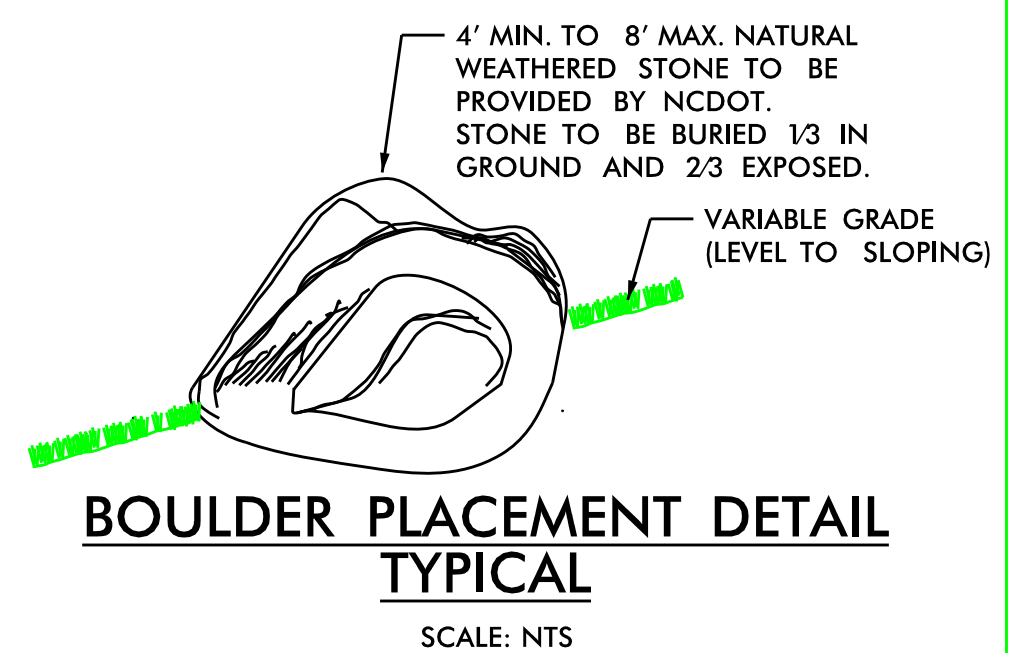


**STAKING DETAIL**  
(TREES 6'-10')

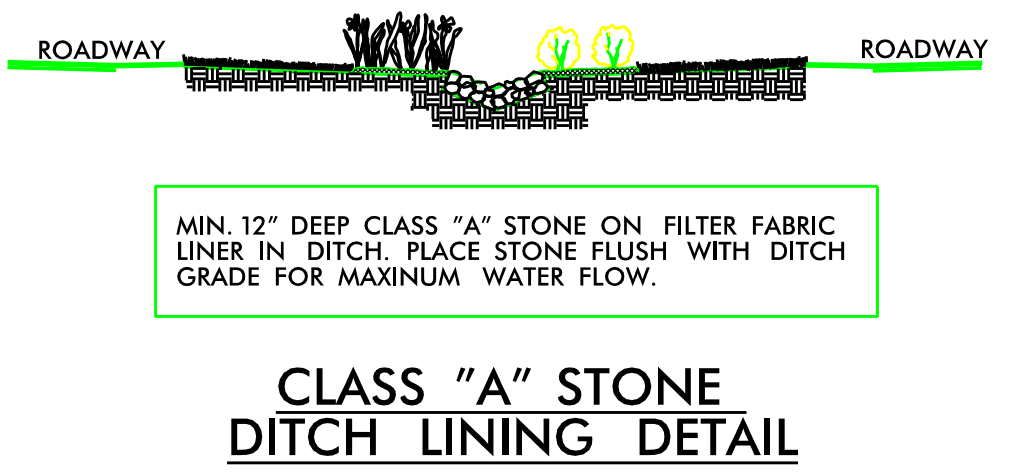
**GUYING DETAIL**  
(TREES 10' OR LARGER)



**GUARDRAIL MULCHING DETAIL**



**BOULDER PLACEMENT DETAIL**  
TYPICAL



**CLASS "A" STONE DITCH LINING DETAIL**

PROJECT TITLE: **CONCORD NC Interchange Landscape Enhancement Cabarrus County**  
 Plans Drawn By: **JK**  
 Scale:  
 Date: **12 / 18 / 2017**  
 Sheet Description: **Planting Details**  
 T.I.P. #  
 Sheet #  
**11 OF 11**

**North Carolina Department of Transportation**  
**Roadside Environmental Unit**  
**Aesthetic Engineering & Landscape Architectural Design**